

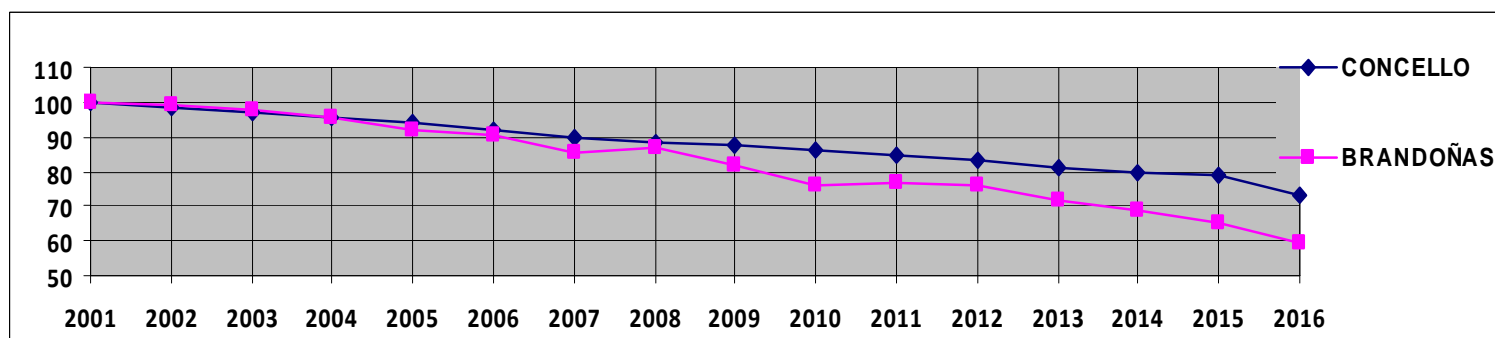
## BRANDOÑAS (SANTA MARÍA)

Por Evaristo Domínguez e Xosé M<sup>a</sup> Lema

Poboación actualizada a 1 de xaneiro de 2016

### BRANDOÑAS (SANTA MARÍA)

|                  | 2001       | 2002       | 2003       | 2004       | 2005       | 2006       | 2007       | 2008       | 2009       | 2010       | 2011       | 2012       | 2013      | 2014      | 2015      | 2016      |
|------------------|------------|------------|------------|------------|------------|------------|------------|------------|------------|------------|------------|------------|-----------|-----------|-----------|-----------|
| <b>BRANDOÑAS</b> | <b>131</b> | <b>130</b> | <b>128</b> | <b>125</b> | <b>120</b> | <b>119</b> | <b>112</b> | <b>114</b> | <b>107</b> | <b>100</b> | <b>100</b> | <b>100</b> | <b>94</b> | <b>90</b> | <b>85</b> | <b>78</b> |
| Borreiros        | 48         | 48         | 45         | 44         | 39         | 37         | 35         | 35         | 33         | 31         | 30         | 30         | 25        | 26        | 25        | 25        |
| Currais , Os     | 31         | 30         | 31         | 32         | 33         | 34         | 32         | 33         | 30         | 25         | 24         | 24         | 24        | 24        | 24        | 20        |
| Gris, A          | 13         | 13         | 13         | 13         | 13         | 13         | 13         | 13         | 13         | 13         | 13         | 13         | 13        | 10        | 10        | 8         |
| Pedrouzos, Os    | 23         | 22         | 23         | 21         | 21         | 21         | 18         | 19         | 19         | 19         | 21         | 21         | 20        | 18        | 13        | 13        |
| Xestosa, A       | 16         | 17         | 16         | 15         | 14         | 14         | 14         | 14         | 12         | 12         | 12         | 12         | 12        | 12        | 13        | 12        |
| Porcentaxes %    | 100        | 99.2       | 97.7       | 95.4       | 91.6       | 90.8       | 85.5       | 87.0       | 81.7       | 76.3       | 76.3       | 76.3       | 71.8      | 68.7      | 64.9      | 59,54     |
| CONCELLO %       | 100        | 98,7       | 97,0       | 95.2       | 93,8       | 92.1       | 90.1       | 88.6       | 87.4       | 86.0       | 84.7       | 82.9       | 80.9      | 79.6      | 78.7      | 77,37     |



**Evolución do poboamento da parroquia de Brandoñas e de todo o concello desde o 2001, en porcentaxes**